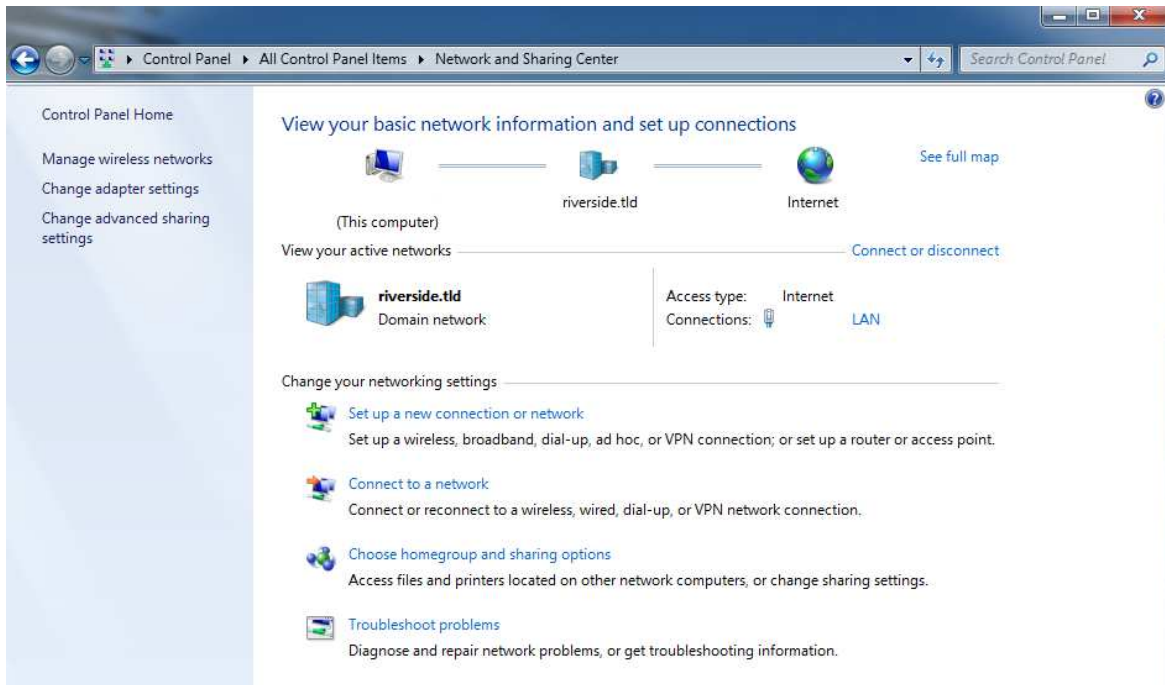


# Windows 7

Start/Control Panel/ Network Sharing and click on “Connect to a Network”

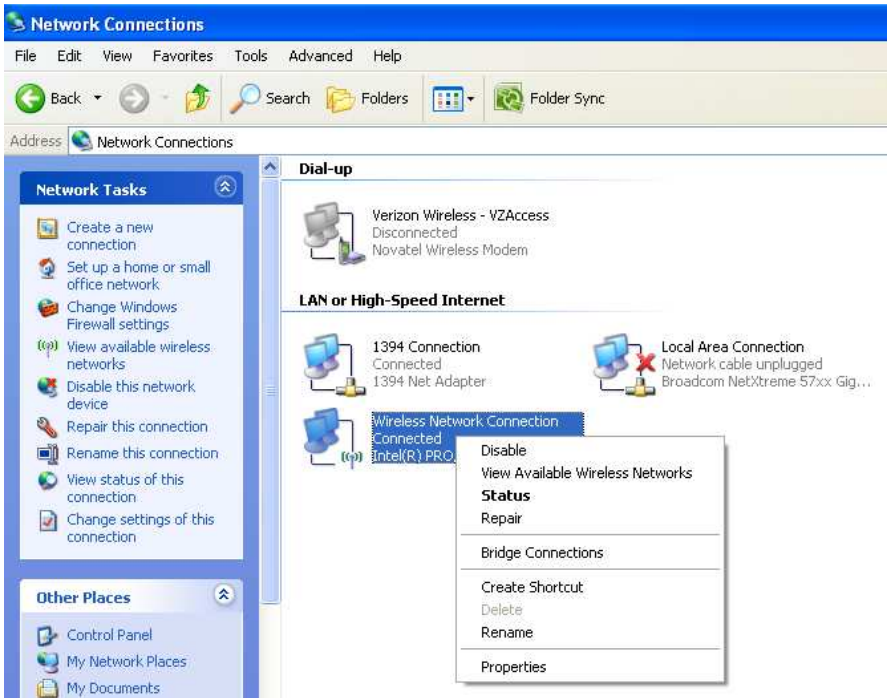


Click SmartRiverside SSID and click “Connect”



## Windows XP

Start/Settings/Control Panel/ Network Connections and Right click on “Wireless Network Connection” and select “View Available Wireless Networks”



Locate SmartRiverside select and click “Connect”

